

अंकप ZOP/यों एवं वि P&D/2022-23/01

दिनांक/Date :12.05.2022

निविदा सूचना/TENDER NOTICE

विनिर्दिष्ट के अनुसार वस्तुओं के दर हेतु मुहरबंद निविदाये आमंत्रित है/ Sealed items rate tenders are invited for the works noted hereunder :

| क्र. स.<br>/S.N | कार्य का विवरण/Name of work  | कार्य-स्थल/Location of work                  | अनुमानित<br>लागत/Estimated Cost |
|-----------------|--|--|---------------------------------|
| 1               | पटना ज़िला स्थित कुर्जी के आंतरिक साज-सज्जा का कार्य/ Interior & Furniture work at Patna | कुर्जी शाखा , ज़िला पटना<br>Distt Patna      | Rs 370000/-                     |
| 2               | पटना ज़िला स्थित कुर्जी शाखा में विदुअत कार्य / Electrical work at Kurjee ,Patna         | कुर्जी शाखा , ज़िला पटना<br>Distt Patna अंचल | Rs220000/-                      |

निबंधन एवं शर्तें/ Terms and Conditions :

- कार्य की पूर्ति हेतु समय: 30 दिन / Time of completion of work: 30 days.
- अर्नेस्ट मनी डिपोजिट: निविदा जमा करने के समय पे आर्डर/ डी डी / बैंकर्स चेक के रूप में अनुमानित लागत का 1% / Earnest Money Deposit: 1% of estimated value at the time of submission of tender in the form of pay order/DD/Banker's cheque.
- आरंभिक अभिरक्षा जमाराशि: सफल बोली लगाने वाले की अर्नेस्ट डिपोजिट मनी को शामिल करते हुए अनुबंधित राशी का 2% / initial security deposit: 2% of the contract value including the EMD by successful bidder.
- सफल बोली लगाने वाले के द्वारा अर्नेस्ट मनी डिपोजिट एवं आरंभिक अभिरक्षा जमा राशी, अनुबंध की अभिरक्षा राशी व रिटेंशन मनी के एवज में समायोजित कर ली जाएगी / The EMD and ISD so deposited by the successful bidder, will be adjusted with the security deposit/ retention money for the contract.
- क्षतिपूर्ति वहन अवधि: कार्य के वास्तविक समापन से छः माह की अवधि तक / Defects liability period: 6 months from date of virtual completion of work.
- निविदा के जमा करने का अंतिम समय एवं तिथि: 02.06.2022 को अपराह्न 2.00 बजे/ Time and last date of submission of tenders: 2:00PM on 02.06.2022.
- निविदा खोलने का अंतिम समय एवं तिथि: 02.06.2022 अपराह्न 4:00 बजे/ Time and last date of opening the tenders: 4:00PM on 02.06.2022
- जमा करने का स्थान / Place of submission: यूको बैंक, अंचल कार्यालय, ब्लॉक बी, मौर्यालोक कॉम्प्लेक्स डाकबंगलो, पटना- 800001.

UCO Bank, Zonal Office, Block B, Maurya Lok Dak Bunglow -800001

9. बिना कोई कारण बताये किसी व सभी निविदाओं को स्थगित करने व निरस्त करने का अपना अधिकार बैंक के पास सुरक्षित है। सभी निविदाये, जिसमे निर्दिष्ट कोई शर्त पूरी नहीं है या किसी भी रूप में अपूर्ण है, निरास्त की जा सकती है / Bank reserves its right to postpone/ reject any or all the tenders without assigning any reason what so ever. All tenders in whom any of the prescribed conditions are not fulfilled or are incomplete in any respect are liable to be rejected.

यूको बैंक, अंचल कार्यालय, ब्लॉक ए, चतुर्थ तल, मौर्या लोक कॉम्प्लेक्स, न्यू डाक बंगला रोड, पटना - 800001

UCO Bank, Zonal Office, Block, 'A', 4<sup>th</sup> Floor, Maurya Lok Complex, New Dak Bunglow Road, Patna-800001

फोन /Phone 0612- 2223953,2222925,6450671, फैक्स : 0612-2220489 ई-मेल / E Mail : zo.patna@ucobank.co.in

10. जीएसटी कर नियमानुसार लगे होगा / GST tax applicable as per norms.
11. सूचीबद्ध कॉन्ट्रैक्टर्स ही सम्बिदा प्रस्तुत करे / All empanelled contractor can submit tenders.
12. किसी भी कारण से टेंडर खुलने के दिन अगर अवकाश रहता है तो अगले कार्य दिवस के दिन टेंडर खुलेगा।



अंचल प्रबंधक / Zonal Manager

**BILL OF QUANTITY OF ELECTRICAL WORKS N/W: PROVIDING ELECTRICAL WORKS FOR  
UCO BANK BANK, AT KURJII BRANCH**

| BRANCH                       |  |      |     |      |        |
|------------------------------|--|------|-----|------|--------|
| A.                           | SUB HEAD-I (WIRING)  |      |     |      |        |
| B.                           | SUB HEAD-II (DISTRIBUTION BOARDS & PANELS)   |      |     |      |        |
| C.                           | SUB HEAD-III (SUPPLY OF FIXTURES & FANS)   |      |     |      |        |
| D.                           | SUB HEAD - IV (SUPPLY OF CABLE MAIN & SUBMAIN)   |      |     |      |        |
| E.                           | SUB HEAD - V (SUPPLY & MAKING OF EARTHPITS)  |      |     |      |        |
|                              | <b>TOTAL:-</b>   |      |     |      |        |
|                              |  |      |     |      |        |
|                              | <b>G.S.T(Extra as applicable)</b>  |      |     |      |        |
|                              |  |      |     |      |        |
| SL. NO.                      | ITEM OF WORK   | UNIT | QTY | RATE | AMOUNT |
| <b>SUB HEAD - I (WIRING)</b> |  |      |     |      |        |
| 1                            | Wiring for light point/ fan point/ exhaust fan point/ call bell point with 1.5 sq mm FR PVC insulated copper condtr single core cable in surface/ recessed PVC conduit with modular switch, modular plate, suitable GI box and earthing the 3rd point with 1.5 sqmm FR PVC insulated copper conductor single core cable etc as reqd. | Each | 30  |      |        |
| 2                            | Wiring for A.C. Point with 2 x 4 sqmm FR PVC insulated copper conductor single core cable in surface/ recessed PVC conduit / PVC Casing - n Capping along with one no 4 sq mm FR PVC insulated copper conductor single core cable for loop earthing as required.   | Mtr. | 65  |      |        |
| 3                            | Sub main Wiring for Light/Fan Power D.B. with 4 x 4 sqmm FR PVC insulated copper conductor single core cable in surface/ recessed PVC conduit / PVC Casing - n Capping along with 1X4 sq mm FR PVC insulated copper conductor single core cable for loop earthing as required.   | Mtr. | 15  |      |        |
| 4                            | Sub Main Wiring from LT Panel to TPN D.B. for RAW power of computer with 4 x 4 sqmm FR PVC insulated copper conductor single core cable in surface/ recessed PVC conduit / PVC Casing - n Capping along with 1X4 sq mm FR PVC insulated copper conductor single core cable for loop earthing as required.                            | Mtr. | 12  |      |        |
| 6                            | Sub main Wiring between LT Panel to UPS Panel to UPS feed D.B. with 2 x 6 sqmm FR PVC insulated copper conductor single core cable in surface/ recessed PVC conduit / PVC Casing - n Capping along with one no 6 sq mm FR PVC insulated copper conductor single core cable for loop earthing as required.                            | Mtr. | 10  |      |        |
| 7                            | Wiring for light/ fan circuit wiring with 2 x 2.5 sqmm FR PVC insulated copper conductor single core cable in surface/ recessed PVC conduit / PVC Casing - n Capping along with one no 2.5 sq mm FR PVC insulated copper conductor single core cable for loop earthing as required.  | Mtr. | 65  |      |        |
| 8                            | Wiring for Power plug wiring with 2 x 2.5 sqmm FR PVC insulated copper conductor single core cable in surface/ recessed PVC conduit / PVC Casing - n Capping along with one no 2.5 sq mm FR PVC insulated copper conductor single core cable for loop earthing as required.  | Mtr. | 25  |      |        |
| 9                            | wiring computer point with 2 x 2.5 sqmm FR PVC insulated copper conductor single core cable surface/ recessed PVC conduit / PVC Casing - n Capping along with one no 2.5 sq mm FR PVC insulated copper conductor single core cable for loop earthing as required.  | Mtr. | 195 |      |        |
| 10                           | Supply & fixing suitable size GI box with modular plate and cover in front on surface/ in recess including providing & fixing 5 pin 5/6 amp modular socket outlet and 5/6 amps modular switch, connection, painting etc as required.   | Set  | 7   |      |        |
| 11                           | Supply & fixing AC controller unit consisting of one no 25 amp AC controller having overload protection starter, one no 20/25 amp SPN MCB and socket outlet, all fixed on a modular plate complete with metal box and recessed in wall as required.  | Set  | 4   |      |        |



|   |   |      |     |  |  |
|---|---|------|-----|--|--|
| 12  | Supply & fixing suitable size GI box with modular plate and cover in front on surface/ in recess including providing & fixing 6 pin 15/16 amp modular socket outlet and 15/16 amps modular switch, connection, painting etc as required.  | Set  | 2   |  |  |
| 11  | Supply & fixing remote controlled call bell buzzer suitable for 230 V AC/ Battery operated with remote type bell push as reqd.  | nos. | 1   |  |  |
| 12  | Supply & fixing of computer point with 3 no. 5 pin 5/6 amp modular socket with modular type switch for UPS Power and 2 no. 5 pin 5/6 amp modular socket with modular type switch phenolic laminated sheet suitable size PVC/G.I. box, As per instruction of Bank/Ele.Er./as required.                                   | nos. | 8   |  |  |
| 13  | Supply & fixing of approved make including square face plate and M.S. housing box with RJ-11 socket etc complete in all respect conduits as required.(Each Section Head work station have 2 no. of RJ 11 Socket)  |      |     |  |  |
| a   | RJ-11 socket  | Set. | 3   |  |  |
| b   | Supplying and drawing 2 pair 0.5 sqmm FR PVC insulated annealed copper conductor, unarmored telephone cable in the existing surface/PVC conduit as required.  | Mtr. | 65  |  |  |
| 14  | Supplying and drawing fixing 8 SWG copper conductor wire for loop earthing as required.   | Mtr. | 15  |  |  |
| 15  | Supply & fixing Commissioning of 9U rack for 24 line Net all complete as required.  | Set. | 0   |  |  |
| 16  | Supplying and fixing of 24 port switch for networking.  | Set. | 0   |  |  |
| 17  | Supply & fixing of approved make including square face plate and M.S. housing box with RJ-45 socket etc complete in all respect including cat-6 Data cable conduits, identification of the hub  |      |     |  |  |
| a   | IO box with RJ-45 socket.   | Set. | 7   |  |  |
| b   | Cat-6 Data cable with PVC conduit   | Mtr. | 205 |  |  |
| c   | Supply & fixing Commissioning of 2 Meter Patch Cord as required, all complete as  | Set. | 8   |  |  |
| <b>TOTAL SUB HEAD-I</b>                                 |   |      |     |  |  |
| <b>SUB HEAD - II (DISTRIBUTION BOARDS &amp; PANELS)</b> |   |      |     |  |  |
| 1   | Supplying & Fixing following ways three pole and neutral sheet steel MCB DB, 415 volts on surface/ recessed complete with tinned copper busbar, neutral busbar, earth bar din bar detachable gland plate interconnections, phosphatised and powder painted i/c earthing etc as reqd. ( But without MCB / RCCB/Isolator) |      |     |  |  |
| a   | 4 Way double door VTPN DB.  | Each | 1   |  |  |
| b   | 16 Way double door SPN DB.  | Each | 1   |  |  |
| 2   | Supply & fixing 5 amps to 32 amps rating 240 V 'C' series MCB suitable for inductive load of following poles in the existing MCB DB complete with connections, testing and commissioning etc as reqd.   |      |     |  |  |
| a   | 10/16 A 10 KA SP MCB "B"  | Each | 22  |  |  |
| b   | 63 A 10 KA FP MCB "C"   | Each | 1   |  |  |
| c   | 40A 10 KA DP MCB  | Each | 1   |  |  |

|   |   |      |   |  |  |
|---|---|------|---|--|--|
| 3   | <p>Supply &amp; fixing of indoor cubicle extensible type fully compartmentalized Distribution panel suitable for operation on 415 volts 50 Hz 3 phase 4 wire AC distribution system, suitable for 35 KA short circuit rating, conforming to IP:42 degree of protection, made up of 1.6 mm thick CRCA sheet, wall/ floor mounted, dust &amp; vermin proof enclosure, having hinged and earthed cover on front, having neoprene gasket/ ratings stuck to the doors, duly painted with 65- 75 microns thick dry epoxy powder paint after 7 tank process of degreasing, derusting etc comprising of the following switchgears complete with all interconnections with suitable size of copper strip/hard drawn PVC insulated copper cable i/c keeping the panel in position, minor civil works as necessary, painting, sign writing etc complete as required (as per specifications of Panel attached)</p> <p><b>TEST REPORT:</b><br/> <b>FOLLOWING REPORTS HAVE TO BE PROVIDED BY THE VENDOR AT THE TIME OF SUBMISSION OF BILL.:</b><br/>           1) FINAL AS BUILT PLAN IN THREE COPIES DRAWN TO THE SCALE, PRINTED IN CASE OF CAD AND BLUE PRINT, IN CASE OF MANUAL DRAWING.<br/>           2) QUALITY REPORT INDICATING THE ITEMS USED WITH THEIR MAKES.<br/>           3) PANEL MANUFACTURER'S CPRI TEST REPORT.<br/>           4) ROUTINE TEST REPORT OF PANEL FOR IR &amp; HV TEST.<br/>           5) GUARANTEE/WARRANTY CARD OF PANEL MANUFACTURER.(Panel Size-H-1400mm, W-900mm &amp; D-300mm)</p> | Set  | 1 |  |  |
|   | <b>INCOMING:</b>  |      |   |  |  |
|   | a) 100 amp 4 pole MCCB not less than 25 KA having Thermo magnetic type release for a range of 80% to 100% for Overload and short circuit complete with rotary handle etc as reqd.: 1 no   |      |   |  |  |
|   | b)63 amp 4 pole heavy duty I-II-I type cubicle changeover switch: 1 no  |      |   |  |  |
|   | <b>METERING:</b>  |      |   |  |  |
|   | a) Multifunctional meter displaying A/V/PF & Hz along with 3 nos Suitable size CTs & HRC type protection fuse etc as reqd: 1 nos  |      |   |  |  |
|   | c) LED type phase indication lamp in phase distinguishing colors with HRC fuse : 6nos   |      |   |  |  |
|   | <b>BUS BAR:</b>   |      |   |  |  |
|   | Main Bus Bar: 4 strip 200 amp bus bar made of electrical grade aluminium strip enclosed in separate bus bar chamber, provided with DMC/ SMC bus bar support duly insulated with heat shrinkable sleeves in distinct colours as reqd: 1 set  |      |   |  |  |
|   | Emergency Load Bus Bar: 4 strip 150 amp bus bar made of electrical aluminium copper strip enclosed in separate bus bar chamber, provided with DMC/ SMC bus bar support duly insulated with heat shrinkable sleeves in distinct colours as reqd: 1 set   |      |   |  |  |
|   | <b>OUTGOINGS:</b>   |      |   |  |  |
|   | 40 amp, 10 KA D Series FP MCB : 1 nos.  |      |   |  |  |
|   | 40 amp, 10 KA D Series DP MCB: 2 nos.   |      |   |  |  |
|   | 25 amp 10 KA C series SPN MCB: 7 nos.   |      |   |  |  |
|   | 63 A rotary type Phase selector: 2 no   |      |   |  |  |
|   | 63 amp DP Manual Change Over For UPS Charging-1 nos.  |      |   |  |  |
| 4   | S/I/T/Commissioning of UPS PRIMARY & SECONDARY consist of:-25 Amps and 32Amps DP MCB with 2 Nos 32Amp power socke in MS Enclosure Box as required, all complete as per instructions of Bank / Architect.  | SET  | 2 |  |  |
|   | <b>TOTAL SUB HEAD-II</b>  |      |   |  |  |
| <b>SUB HEAD - III (SUPPLY OF FIXTURES &amp; FANS)</b> |   |      |   |  |  |
| 1   | Supplying of 6W/9W LED batten suitable for indoor application.  | Each | 3 |  |  |
| 2   | Supplying of stepped type electronic fan regulator on the existing modular plate switch box i/c connection but excluding modular plate etc as reqd.   | Each | 1 |  |  |

|   |  |      |    |  |  |
|---|--|------|----|--|--|
| 3   | Supplying, installation, testing & fixing of 36W LED CRCA white powder coated housing with ABS plastic bottom frame with electronic driver duly wired up to the terminal block, luminaire suitable for armstrong ceiling and grid ceiling complete with separate electronic driver. As approved make by Electrical consultant/architect etc as reqd.   | Each | 7  |  |  |
| 4   | Supplying of recess mounted circular LED (dia-6") downlighter 9/12 Watt LED suitable for armstrong ceiling and grid ceiling complete with separate electronic drive/approved make by architect/Ele. Consultant etc as required.  | Each | 4  |  |  |
| 5   | Supplying, installation, testing & fixing of 1X36 W tube light fitting powder coated batten with PC tube.  | Each | 5  |  |  |
| 6   | Supplying of Exhaust fan 300mm sweep HEAVY DUTY EXHAUST make-CROMPTON / approved equivalent.   | Each | 1  |  |  |
| 7   | Supplying of 1200 mm sweep energy efficient ceiling fan, connection with 1.5 sqmm PVC ins copper condtr, testing, commissioning etc as reqd.   | Each | 0  |  |  |
| 8   | Supplying of oscillating and tilting type wall bracket fan of 450 mm sweep i/c fixing the same on wall with Metal finishing , connection with 1.5 sqmm PVC insulated copper conductor, testing, commissioning etc as required. (Make Usha, Bajaj, Havells)   | Each | 6  |  |  |
| <b>TOTAL SUB HEAD-III</b>                                 |  |      |    |  |  |
| <b>SUB HEAD - IV (SUPPLY OF CABLE MAIN &amp; SUBMAIN)</b> |  |      |    |  |  |
| 1   | Supply & laying for sub main from L.T line & DG line following sizes and core PVC/XLPE insulated PVC sheathed, heavy duty, armored electrical cable with aluminum conductor for working voltage up to and including 1100 volts.(Conforms to IS:1554, part-1) with 8 no. SWG die bare copper conductor wire for loop earthing, proper laying on wall or roof, thumbnail clipping and use proper size cable gland for cable sport etc. as required. all complete as per instructions of Elec. Er. / Architect. |      |    |  |  |
| a   | 35 sq.mm, 3.5 core LT Cable  | Mtr. | 35 |  |  |
| <b>TOTAL SUB HEAD-IV</b>                                  |  |      |    |  |  |
| <b>SUB HEAD - V (SUPPLY &amp; MAKING OF EARTHPITS)</b>    |  |      |    |  |  |
| 1   | Earthing with GI earth plate 600mm x 600mm x 6 mm thick accessories and pdg masonry enclosure with cover plate having locking arrangement and watering pipe etc ( but without charcoal or coke and salt) complete as required.   | Set  | 1  |  |  |
| 2   | Extra for using charcoal and sal for GI / copper earth plate electrode as required ( 96 Kg charcoal & 5 Kg salt)   | Set  | 1  |  |  |
| 3   | Providing & laying earth connection from earth electrode with 6 SWG dia GI wire in 15 mm dia. GI pipe from earth electrode as required.  | Mtr. | 15 |  |  |
| 4   | S/L 6 SWG G.I. wire on surface or in recess as reqd.   | Mtr. | 12 |  |  |
| 5   | High voltage insulation mat are relatively thin mats of thickness (2mm to 3.5mm) made of elastomeric polymers materials having a high insulation resistance, thus imparting total safety of human being from any leakage current.(Size-4'X5')  | Sqft | 20 |  |  |
| <b>TOTAL SUB HEAD-V</b>                                   |  |      |    |  |  |



**BILL OF QUANTITY OF ELECTRICAL WORKS N/W: PROVIDING ELECTRICAL WORKS FOR  
UCO BANK BANK, AT KURJII BRANCH**

| BRANCH                       |  |      |     |      |        |
|------------------------------|--|------|-----|------|--------|
| A.                           | SUB HEAD-I (WIRING)  |      |     |      |        |
| B.                           | SUB HEAD-II (DISTRIBUTION BOARDS & PANELS)   |      |     |      |        |
| C.                           | SUB HEAD-III (SUPPLY OF FIXTURES & FANS)   |      |     |      |        |
| D.                           | SUB HEAD - IV (SUPPLY OF CABLE MAIN & SUBMAIN)   |      |     |      |        |
| E.                           | SUB HEAD - V (SUPPLY & MAKING OF EARTHPIES)  |      |     |      |        |
|                              | TOTAL:-  |      |     |      |        |
|                              | G.S.T(Extra as applicable)   |      |     |      |        |
| SL. NO.                      | ITEM OF WORK   | UNIT | QTY | RATE | AMOUNT |
| <b>SUB HEAD - I (WIRING)</b> |  |      |     |      |        |
| 1                            | Wiring for light point/ fan point/ exhaust fan point/ call bell point with 1.5 sq mm FR PVC insulated copper condtr single core cable in surface/ recessed PVC conduit with modular switch, modular plate, suitable GI box and earthing the 3rd point with 1.5 sqmm FR PVC insulated copper conductor single core cable etc as reqd. | Each | 30  |      |        |
| 2                            | Wiring for A.C. Point with 2 x 4 sqmm FR PVC insulated copper conductor single core cable in surface/ recessed PVC conduit / PVC Casing - n Capping along with one no 4 sq mm FR PVC insulated copper conductor single core cable for loop earthing as required.   | Mtr. | 65  |      |        |
| 3                            | Sub main Wiring for Light/Fan Power D.B. with 4 x 4 sqmm FR PVC insulated copper conductor single core cable in surface/ recessed PVC conduit / PVC Casing - n Capping along with 1X4 sq mm FR PVC insulated copper conductor single core cable for loop earthing as required.   | Mtr. | 15  |      |        |
| 4                            | Sub Main Wiring from LT Panel to TPN D.B. for RAW power of computer with 4 x 4 sqmm FR PVC insulated copper conductor single core cable in surface/ recessed PVC conduit / PVC Casing - n Capping along with 1X4 sq mm FR PVC insulated copper conductor single core cable for loop earthing as required.                            | Mtr. | 12  |      |        |
| 6                            | Sub main Wiring between LT Panel to UPS Panel to UPS feed D.B. with 2 x 6 sqmm FR PVC insulated copper conductor single core cable in surface/ recessed PVC conduit / PVC Casing - n Capping along with one no 6 sq mm FR PVC insulated copper conductor single core cable for loop earthing as required.                            | Mtr. | 10  |      |        |
| 7                            | Wiring for light/ fan circuit wiring with 2 x 2.5 sqmm FR PVC insulated copper conductor single core cable in surface/ recessed PVC conduit / PVC Casing - n Capping along with one no 2.5 sq mm FR PVC insulated copper conductor single core cable for loop earthing as required.  | Mtr. | 65  |      |        |
| 8                            | Wiring for Power plug wiring with 2 x 2.5 sqmm FR PVC insulated copper conductor single core cable in surface/ recessed PVC conduit / PVC Casing - n Capping along with one no 2.5 sq mm FR PVC insulated copper conductor single core cable for loop earthing as required.  | Mtr. | 25  |      |        |
| 9                            | wiring computer point with 2 x 2.5 sqmm FR PVC insulated copper conductor single core cable surface/ recessed PVC conduit / PVC Casing - n Capping along with one no 2.5 sq mm FR PVC insulated copper conductor single core cable for loop earthing as required.  | Mtr. | 195 |      |        |
| 10                           | Supply & fixing suitable size GI box with modular plate and cover in front on surface/ in recess including providing & fixing 5 pin 5/6 amp modular socket outlet and 5/6 amps modular switch, connection, painting etc as required.   | Set  | 7   |      |        |
| 11                           | Supply & fixing AC controller unit consisting of one no 25 amp AC controller having overload protection starter, one no 20/25 amp SPN MCB and socket outlet, all fixed on a modular plate complete with metal box and recessed in wall as required.  | Set  | 4   |      |        |

|   |   |      |     |  |  |
|---|---|------|-----|--|--|
| 12  | Supply & fixing suitable size GI box with modular plate and cover in front on surface/ in recess including providing & fixing 6 pin 15/16 amp modular socket outlet and 15/16 amps modular switch, connection, painting etc as required.  | Set  | 2   |  |  |
| 11  | Supply & fixing remote controlled call bell buzzer suitable for 230 V AC/ Battery operated with remote type bell push as reqd.  | nos. | 1   |  |  |
| 12  | Supply & fixing of computer point with 3 no. 5 pin 5/6 amp modular socket with modular type switch for UPS Power and 2 no. 5 pin 5/6 amp modular socket with modular type switch phenolic laminated sheet suitable size PVC/G.I. box. As per instruction of Bank/Elc.Er./as required.                                   | nos. | 8   |  |  |
| 13  | Supply & fixing of approved make including square face plate and M.S. housing box with RJ-11 socket etc complete in all respect conduits as required.(Each Section Head work station have 2 no. of RJ 11 Socket)  |      |     |  |  |
| a   | RJ-11 socket  | Set. | 3   |  |  |
| b   | Supplying and drawing 2 pair 0.5 sqmm FR PVC insulated annealed copper conductor, unarmored telephone cable in the existing surface/PVC conduit as required.  | Mtr. | 65  |  |  |
| 14  | Supplying and drawing fixing 8 SWG copper conductor wire for loop earthing as required.   | Mtr. | 15  |  |  |
| 15  | Supply & fixing Commissioning of 9U rack for 24 line Net all complete as required.  | Set. | 0   |  |  |
| 16  | Supplying and fixing of 24 port switch for networking.  | Set. | 0   |  |  |
| 17  | Supply & fixing of approved make including square face plate and M.S. housing box with RJ-45 socket etc complete in all respect including cat-6 Data cable conduits, identification of the hub  |      |     |  |  |
| a   | IO box with RJ-45 socket.   | Set. | 7   |  |  |
| b   | Cat-6 Data cable with PVC conduit   | Mtr. | 205 |  |  |
| c   | Supply & fixing Commissioning of 2 Meter Patch Cord as required, all complete as  | Set. | 8   |  |  |
| 18  | Supplying and drawing 1X2.5 sqmm size of FR PVC insulated copper conductor,   | Mtr. | 75  |  |  |
| 18  | Wiring for main line input for Inverter charging with 3x4sqmm copper wire   | Mtr. | 20  |  |  |
| 19  | Supply & fixing of Input output for Inverter having overload protection starter, one  | Set  | 2   |  |  |
| <b>TOTAL SUB HEAD-I</b>                                 |   |      |     |  |  |
| <b>SUB HEAD - II (DISTRIBUTION BOARDS &amp; PANELS)</b> |   |      |     |  |  |
| 1   | Supplying & Fixing following ways three pole and neutral sheet steel MCB DB, 415 volts on surface/ recessed complete with tinned copper busbar, neutral busbar, earth bar din bar detachable gland plate interconnections, phosphatised and powder painted i/c earthing etc as reqd. ( But without MCB / RCCB/Isolator) |      |     |  |  |
| a   | 4 Way double door VTPN DB.  | Each | 1   |  |  |
| b   | 16 Way double door SPN DB.  | Each | 1   |  |  |
| 2   | Supply & fixing 5 amps to 32 amps rating 240 V 'C' series MCB suitable for inductive load of following poles in the existing MCB DB complete with connections, testing and commissioning etc as reqd.   |      |     |  |  |
| a   | 10/16 A 10 KA SP MCB "B"  | Each | 22  |  |  |
| b   | 63 A 10 KA FP MCB "C"   | Each | 1   |  |  |
| c   | 40A 10 KA DP MCB  | Each | 1   |  |  |



|   |   |      |   |  |  |
|---|---|------|---|--|--|
| 3   | <p>Supply &amp; fixing of indoor cubicle extensible type fully compartmentalized Distribution panel suitable for operation on 415 volts 50 Hz 3 phase 4 wire AC distribution system, suitable for 35 KA short circuit rating, confirming to IP:42 degree of protection, made up of 1.6 mm thick CRCA sheet, wall/ floor mounted, dust &amp; vermin proof enclosure, having hinged and earthed cover on front, having neoprene gasket/ katings stuck to the doors, duly painted with 65- 75 microns thick dry epoxy powder paint after 7 tank process of degreasing, derusting etc comprising of the following switchgears complete with all interconnections with suitable size of copper strip/hard drawn PVC insulated copper cable i/c keeping the panel in position, minor civil works as necessary, painting, sign writing etc complete as required (as per specifications of Panel attached)</p> <p><b>TEST REPORT:</b><br/> <b>FOLLOWING REPORTS HAVE TO BE PROVIDED BY THE VENDOR AT THE TIME OF SUBMISSION OF BILL:.</b><br/>           1) FINAL AS BUILT PLAN IN THREE COPIES DRAWN TO THE SCALE, PRINTED IN CASE OF CAD AND BLUE PRINT, IN CASE OF MANUAL DRAWING.<br/>           2) QUALITY REPORT INDICATING THE ITEMS USED WITH THEIR MAKES.<br/>           3) PANEL MANUFACTURER'S CPRI TEST REPORT.<br/>           4) ROUTINE TEST REPORT OF PANEL FOR IR &amp; HV TEST.<br/>           5) GUARANTEE/WARRANTY CARD OF PANEL MANUFACTURER.(Panel Size-H-1400mm, W-900mm &amp; D-300mm)</p> | Set  | 1 |  |  |
|   | <b>INCOMING:</b>  |      |   |  |  |
|   | a) 100 amp 4 pole MCCB not less than 25 KA having Thermo magnetic type release for a range of 80% to 100% for Overload and short circuit complete with rotary handle etc as reqd.: 1 no   |      |   |  |  |
|   | b)63 amp 4 pole heavy duty I-II-I type cubicle changeover switch: 1 no  |      |   |  |  |
|   | <b>METERING:</b>  |      |   |  |  |
|   | a) Multifunctional meter displaying A/V/PF & Hz along with 3 nos Suitable size CTs & HRC type protection fuse etc as reqd: 1 nos  |      |   |  |  |
|   | c) LED type phase indicationg lamp in phase distinguishing colors with HRC fuse : 6nos  |      |   |  |  |
|   | <b>BUS BAR:</b>   |      |   |  |  |
|   | Main Bus Bar: 4 strip 200 amp bus bar made of electrical grade aluminium strip enclosed in separate bus bar chamber, provided with DMC/ SMC bus bar support duly insulated with heat shrinkable sleeves in distinct colours as reqd: 1 set  |      |   |  |  |
|   | Emergency Load Bus Bar: 4 strip 150 amp bus bar made of electrical aluminium copper strip enclosed in separate bus bar chamber, provided with DMC/ SMC bus bar support duly insulated with heat shrinkable sleeves in distinct colours as reqd: 1 set   |      |   |  |  |
|   | <b>OUTGOINGS:</b>   |      |   |  |  |
|   | 40 amp, 10 KA D Series FP MCB : 1 nos.  |      |   |  |  |
|   | 40 amp, 10 KA D Series DP MCB: 2 nos.   |      |   |  |  |
|   | 25 amp 10 KA C series SPN MCB: 7 nos.   |      |   |  |  |
|   | 63 A rotary type Phase selector: 2 no   |      |   |  |  |
|   | 63 amp DP Manual Change Over For UPS Charging-1 nos.  |      |   |  |  |
| 4   | S/I/T/Commissioning of UPS PRIMARY & SECONDARY consist of:-25 Amps and 32Amps DP MCB with 2 Nos 32Amp power socke in MS Enclosure Box as required, all complete as per instructions of Bank / Architect.  | SET  | 2 |  |  |
|   | <b>TOTAL SUB HEAD-II</b>  |      |   |  |  |
| <b>SUB HEAD - III (SUPPLY OF FIXTURES &amp; FANS)</b> |   |      |   |  |  |
| 1   | Supplying of 6W/9W LED batten suitable for indoor application.  | Each | 3 |  |  |
| 2   | Supplying of stepped type electronic fan regulator on the existing modular plate switch box i/c connection but excluding modular plate etc as reqd.   | Each | 1 |  |  |

|   |  |      |    |  |  |
|---|--|------|----|--|--|
| 3   | Supplying, installation, testing & fixing of 36W LED CRCA white powder coated housing with ABS plastic bottom frame with electronic driver duly wired up to the terminal block, luminaire suitable for armstrong ceiling and grid ceiling complete with separate electronic driver.As approved make by Electrical consultant/architect etc as reqd.  | Each | 7  |  |  |
| 4   | Supplying of recess mounted circular LED (dia-6") downlighter 9/12 Watt LED suitable for armstrong ceiling and grid ceiling complete with separate electronic drive/approved make by architect/Ele.Consultant etc as required.   | Each | 4  |  |  |
| 5   | Supplying, installation, testing & fixing of 1X36 W tube light fitting powder coated batten with PC tube.  | Each | 5  |  |  |
| 6   | Supplying of Exhaust fan 300mm sweep HEAVY DUTY EXHAUST make-CROMPTON / approved equivalent.   | Each | 1  |  |  |
| 7   | Supplying of 1200 mm sweep energy efficient ceiling fan, connection with 1.5 sqmm PVC ins copper condtr, testing, commissioning etc as reqd.   | Each | 0  |  |  |
| 8   | Supplying of oscillating and tilting type wall bracket fan of 450 mm sweep i/c fixing the same on wall with Metal finishing , connection with 1.5 sqmm PVC insulated copper conductor, testing, commissioning etc as required. (Make Usha, Bajaj, Havells)   | Each | 6  |  |  |
| <b>TOTAL SUB HEAD-III</b>                                 |  |      |    |  |  |
| <b>SUB HEAD - IV (SUPPLY OF CABLE MAIN &amp; SUBMAIN)</b> |  |      |    |  |  |
| 1   | Supply & laying for sub main from L.T line & DG line following sizes and core PVC/XLPE insulated PVC sheathed, heavy duty, armored electrical cable with aluminum conductor for working voltage up to and including 1100 volts.(Conforms to IS:1554,part-1) with 8 no. SWG die bare copper conductor wire for loop earthing, proper laying on wall or roof, thumbnail clipping and use proper size cable gland for cable sport etc. as required. all complete as per instructions of Elec.Er. / Architect. |      |    |  |  |
| a   | 35 sq.mm, 3.5 core LT Cable  | Mtr. | 35 |  |  |
| <b>TOTAL SUB HEAD-IV</b>                                  |  |      |    |  |  |
| <b>SUB HEAD - V (SUPPLY &amp; MAKING OF EARTHPIITS)</b>   |  |      |    |  |  |
| 1   | Earthing with GI earth plate 600mm x 600mm x 6 mm thick accessories and pdg masonry enclosure with cover plate having locking arrangement and watering pipe etc ( but without charcoal or coke and salt) complete as required.   | Set  | 1  |  |  |
| 2   | Extra for using charcoal and sal for GI / copper earth plate electrode as required ( 96 Kg charcoal & 5 Kg salt)   | Set  | 1  |  |  |
| 3   | Providing & laying earth connection from earth electrode with 6 SWG dia GI wire in 15 mm dia. GI pipe from earth electrode as required.  | Mtr. | 15 |  |  |
| 4   | S/L 6 SWG G.I.wire on surface or in recess as reqd.  | Mtr. | 12 |  |  |
| 5   | High voltage insulation mat are relatively thin mats of thicknes (2mm to 3.5mm) made of elastomeric polymers materials having a high insulation restance, thus imparting total safety of humen being from any leakage current.(Size-4'X5')   | Sqft | 20 |  |  |
| <b>TOTAL SUB HEAD-V</b>                                   |  |      |    |  |  |

**BILL OF QUANTITY OF INTERIOR DESIGN AND FURNITURE WORKS FOR UCO BANK,  
AT KURJI BRANCH**

| Sl. No. | DESCRIPTION   | UNIT  | QTY.   | RATE | AMOUNT |
|---------|---|-------|--------|------|--------|
|         | Note-I: Anti-termite with Chloropyrphos of approved brand and make to be done on all wooden surfaces.   |       |        |      |        |
|         | Note-II: Wherever painting items are mentioned, these always include the base coats of primer required and a minimum of 2 coats of the Final paint, Anti-termite with Chloropyrphos of approved brand and make to be done on all wooden surfaces.   |       |        |      |        |
| 1       | <b>Semi Glazed Partition</b> -Providing and fixing fullheight double skin partitions in cabins etc, with frames of 2" x 2" hardwood members (hollock / malaysian sal) or (finished size) seasoned ( with frame of 50mm x50mm x 2mm aluminium section) at max. intervals of 2'-0" x 2'-0" c/c with provision of bigger members at skirting, fixing to door frames, etc, all wood work to be treated with 1st quality anti-termite paint, and covered with 6 mm thick Plywood of approved make covered with various finishing layers as per design and details including 1 mm thick laminate.The partition between the level 3'-0" to 7'-0" have 10 mm thk Float glass with 3M Make CRYSTAL engraved etching film. Glass panel as an insert with 3 1/4"x1" thk.beach wood (BW) beading with melamine spray polish including all hardwares etc. complete. .The partition should be firmly fixed on floor/ counter/ wall.Opening for communication / conversation shall be provided as required as per detailed design and nothing extra shall be paid / deduction for the same.All doors including sliding doors / openable doors, with all fittings including ISI Marked Floor Springs, Hinges, Bolts, etc., shall be included in the same price. Doors shall be of heavy sections matching the partition as per design,and shall have 8.0 mm thick etched glass as per design.All items necessary for completing the above mentioned work are deemed to be included in the scope of work, whether or not they are specifically mentioned in the B.O.Q / tender documents / drawings.   | S.Ft. | 290.00 |      |        |
| 2       | (HALF HEIGHT PARTITIONS-FULLY PANELLED) (4'6" ht) The partition between the level 3'-0" to 4'6" have 12 mm thk Float glass .Providing and fixing half height double skin partitions in cabins etc, with frames of 2" x 2" (finished size) seasoned hardwood members (hollock / malaysian sal) at max. intervals of 1'-6" x 1'-6" c/c with provision of bigger members at skirting, fixing to door frames, etc, all wood work to be treated with 1st quality anti-termite paint, and 6 mm thick Plywood of approved make covered with various finishing layers as per design and details including 1 mm thick laminate. (All visible wood to be of 1st quality "gamhar") and shall be painted with Premium 1st quality paint / polished as per instructions of Bank. Ghambhar Frame shall be neatly painted / polished to a glossy finish with premium quality paint / polish. All necessary hardware such as hinges, bolts, etc, and any other hardware required for the wicket door, shall be included in the price.Laminates shall have a number of horizontal / vertical grooves and the ply under such grooves shall be painted with approved colours.Openings for communication / conversation shall be provided as required as per detailed design and nothing extra shall be paid / deduction for the same.All electrical wires, accessories, telephone wires, Doors shall be of heavy sections matching the partition as per design etc, shall be run in the partition without any extra charges for the same.All items necessary for completing the above mentioned work are deemed to be included in the scope of work, whether or not they are specifically mentioned in the B.O.Q / tender documents / drawings.All exposed wooden surfaces are to be painted with Premium quality paint as per Specifications. | S.Fl. | 50.00  |      |        |
| 3       | (HYDRAULIC DOOR CLOSER) Providing and fixing Hydraulic door closers of specified brand, all complete as per instructions of Architect / Employer.   | Each  | 5.00   |      |        |
| 5       | (LOCKS) Providing and fixing "Godrej Night Latch" / "Godrej Mortice Lock" in required places, all complete with fixing, fitting, etc.   | Each  | 5.00   |      |        |



|    |   |      |       |  |  |
|----|---|------|-------|--|--|
| 6  | <p>(EXECUTIVE TABLES) Providing and Placing new executives tables alongwith matching credenza of plan size (basic) as given below and credenza of plan size as given below, table top to be made of 19 mm thick plywood of approved make, edged with beading of 2" x 1-12" approx), cut to required shape, top of table to have 1.0 mm thick laminate, and teakwood beading to be polished to required colour and finish. Table to have a vertical modesty panel of 19 mm thick plywood of approved make laminated/Plain with laminate (1.0 mm thick) from the outer side and painted with minimum 2 coats of premium 1st quality paint on the inner side. Modesty partition to have 1st quality beading on top as per design and specifications and Quality Enamel paint over appropriate priming coat on the internal surface.</p> <p>Laminate to have a no. of grooves as per design and drawings. Achest of drawers shall support the table on 1 side (except in the case of staff tables of 4'-0" width, where the table shall be supported on one side by the credenza unit) integrally connected to the modesty partition, made of 19 mm thick plywood of approved make, drawers to slide on drawer slides (EBCO / Equivalent), and made of 19 mm thick grade bwp board for all sides and bottom cabine shutters of 19 mm thick plywood of approved make, cabinet hinges to be t-type, self closing, EBCO / Equivalent, all edges of all blockboard / plywood to be sealed with 1st quality teakwood edging, including blockboard members touching the ground.</p> <p>Drawers and cabinet shutters to be laminated on all external surfaces with 1.0 mm thick laminate, and painted on all visible internal surfaces with premium 1st quality enamel paint as Specified above.</p> |      |       |  |  |
|    | <p>All drawers and cabinets (both in tables and credenza) to be provided with high quality 'Gogrei' locks, and high quality handles as per Item No. B above.</p> <p>The other end of the table to be supported / integrated with a credenza unit of basic 2'-6" height, or as required, top, back and sides made out of 19 mm thick plywood of approved make laminated/Plain, top to be finished with 1.0 mm thick laminate and teakwood beading o/o 1" x 1", carved as per design, and finished as per table Specifications above.</p> <p>Drawers and cabinets, cabinet shutters, etc. Shutters will be hung by auto-closing hinges, locks, magnetic door catcher and satin finished S. S. handles etc. of approved make, to be as described in table specifications above, including all finishing details, and one glazed cabinet shutter in 1st Quality Teakwood frame, finished with laminate also to be laminated with 1.0 mm thick laminate grooves as / design.</p> <p>Keyboard unit as per design and specification to be included in the rate.</p> <p><b>Table edges should not be sharp it should be smooth finishes with EDGE Banding. (Rahau or equivalent. Company)</b></p> <p><b>Laminate pasting pattern / design as per banks design guideline/detail/reference.</b></p>   |      |       |  |  |
| a) | BM table ( 5'-6" x 3'-0"x2'6")  | Each | 1.00  |  |  |
| b) | Officer table (4'-0" x 2'-6" x2'6")   | Each | 0.00  |  |  |
| c) | Credenza (3'6"x1'-3" x2'-6")  | Each | 1.00  |  |  |
| d) | Sill Ht cabinet;-(elevation area calculation))  | SFT  | 21.00 |  |  |
| 7  | <p>(COUNTERS) Providing and fixing COMPUTER COUNTERS (formerly from as LEDGER COUNTERS) made out of 19 mm thick plywood of approved make and as per the attached drawing, all complete with 1.0 mm thick laminate (Greenlam/Century) on all visible surface, tabletops, customer top, etc. and all drawers etc. to be painter with 1 coat of primer and 2 coats of 1st quality enamel paint). 12 mm thick glass, MODIGUARD/ASAHI, branded, to be used on top of the COMPUTER COUNTER. Keyboard Tray to be provided on Special Keyboard Slides, and wristrest to be given. Drawer Slides to be used for all drawers. All locks to be of Godrej / Linc. All drawers, cabinets, Keyboard, etc. to be lockable. Footrest to be provided. (See Detailed drawing attached). The Front of the Computer Counter shall have decorative finishing in ply and laminate as shown in the drawing attached.</p>   | RFT  | 8.50  |  |  |
| 8  | <p>(CASH COUNTERS) Providing and fixing Cash Counters, to be made entirely of 19 mm thick plywood for all surfaces, with the working top of 3'-6" width at 2'-6" level, and the customer top of 1'-6" width at 4'-0" level. Chest of drawers (lockable) with Godrej / Links to be provided and on cabinet just below drawer. The working top to be 3'-0" wide, fully detailed out with overhangs and supports as per detail drawings, all edges to be sealed with teakwood beading, polished / painted as per directions, all complete with footrest of ghambhar wool of section 4" x 2", all complete with all hardware, supporting clips, etc. The front of the Counter shall have decorative features, all complete, as per the designs and drawings attached.</p>   | RFT  | 9.00  |  |  |

|    |  |        |        |  |  |
|----|--|--------|--------|--|--|
| 9  | (COMPUTER CASH AND CASH CAGE PARTITIONS - FRONT) Providing and fixing cash cage glazed partition on top of cash counter facing the customer with 12 mm thick clear float glass (Modiguard) fixed in a frame of 2" x 3" teakwood on all three sides, duly polished, all beading etc. as required, all cutting of glass as required, all complete.   | S.Ft.  | 35.00  |  |  |
| 10 | (COMPUTER CASH AND CASH CAGE PARTITIONS - SIDES & REAR) Providing and fixing cash cage partition, as per specifications given in Item No. 1a above, modified in height and the openings required to suit the requirements of cash cages, with the exception that in addition to 8.0 mm glass, aluminium mesh shall be given in all cash cage partitions, etc, from 4'-0" to 7'-0", along with supporting members all doors, as per specifications given in Item No. 1 above, all hardware for doors excluding door closers, godrej night latches which shall be paid for separately, all complete. The front of the cash cage shall be done in a decorative design, as shown in the attached drawings and details.   | S.Ft.  | 195.00 |  |  |
| 12 | (NOTICE BOARD) Providing and fixing a notice board near the Waiting area, frame to be made of 1st quality hardwood, and infill of 12 mm thick Celotex, board, duly covered with "Matte" quality cloth of approved colour and make. Visible surfaces of Frame to be painted with "Premium 1st Quality Paint" in approved colour and shade, and internal frames and internal surface of celotex board to be painted with priming coat. The frame is to be securely fixed to the wall, all complete as per directions for the Architect / Employer. Size: 4'-6" x 3'-0".  | Each   | 1.00   |  |  |
| 13 | <b>Main Entrance Door:</b> Entrance door side Providing and fixing 12 mm thk. full ht. Toughened Glass partitions with etched horizontal liner of 1"ht. and 1/2"clear space in between as per design ,Rate should be inclusive of additional Aluminium profile fixed in the flooring and above finished false ceiling level with necessary patch fittings as required to hold the glass partition. All exposed edges surfaces should be machine polished edges. The Rate shall be also inclusive of floor spring ,necessary hardware 3'-0"ht. Matt steel door handles with floor locking arrangement of Enox co. etc. Complete as per designs and details from the Architects.The rate shall be inclusive of Horizontal Etched Lining in between 3' to 6' ht. horizontal etched lining of 1"frost and 1/2" clear as per design etc. complete. Supplying and fixing banks logo – sticker as per drawing and design. Glass wall as per design and instruction by Architect /Enginee  | S.Ft.  | 0.00   |  |  |
| 14 | <b>PANELING WITH LAMINATE FINISH</b> Providing & Fixing laminate finish paneling for , columns etc. made out of 2" X 1" C.P.T. Wood frame work at every 1'6" c/c ( vertical/horizontal) both ways, covered with 10mm thick ply.All exposed surfaces of the paneling shall be finish with approved color 1.00 mm thk laminate complete as per detail drawing & instructions of Architect. (upto 8'0" height/False ceiling)  | S.Ft.  | 90.00  |  |  |
| 15 | <b>(FALSE CEILING)</b><br><b>Gypsum board false ceiling with Vertical band /drop of per detail drawing &amp; instructions of Architect</b><br><br>( Any alteration / change in drawing & design (as per given by architects) shall be bear by contractor at his/her on cost)<br><b>Gypsum board false ceiling</b><br><br>Providing and fixing in position Gypsum Board False Ceiling including Two coats of Plastic emulsion Paint of appd.quality as per manufacturer's specifications and instructions with 12.5 mm thick 'Gypboard' Screw-fixed to the underside Of suspended G.I. grid. G.I. grid should be Constructed and suspended from the main ceiling as per manufacturer's instructions and as per specifications using Original Co. Specified Framework Sections G.I.24 gauge The Gypboard should be fixed to G.I. grid with 25 mm long Drawali Screws. The 'Gypboard ' to be used should be 12.5mm thick tapered edge boards. The boards should Be taped and filled from underside to give smooth, seamless ceiling. The rate should include necessary additional ceiling sections and intermediate channels openings for light fixtures, A.C. ducts, vertical drops, offsets. etc.<br><br>Additional Intermediate channels should be fixed to strap hangers for additional support to prevent strap hangers from buckling/swaying at every 1200 mm. Item to be completed in all respect including necessary sleeves for ducts finishing of joints cut outs supports for A.C. grills, light fixtures, speakers etc.Make: Gypsum board-India Gypsum. Paint make-Asian/ ICI<br><br>The rate should include necessary additional ceiling sections and intermediate channels openings for light fixtures, A.C. ducts, vertical drops, offsets,and with two coats of putty, two coats of approved primer, and three coats of approved lustre paint |        |        |  |  |
|    |  | SQ.FT. | 0.00   |  |  |
| II | <b>New Technologies &amp; Materials (Grid False Ceiling)</b>   |        |        |  |  |

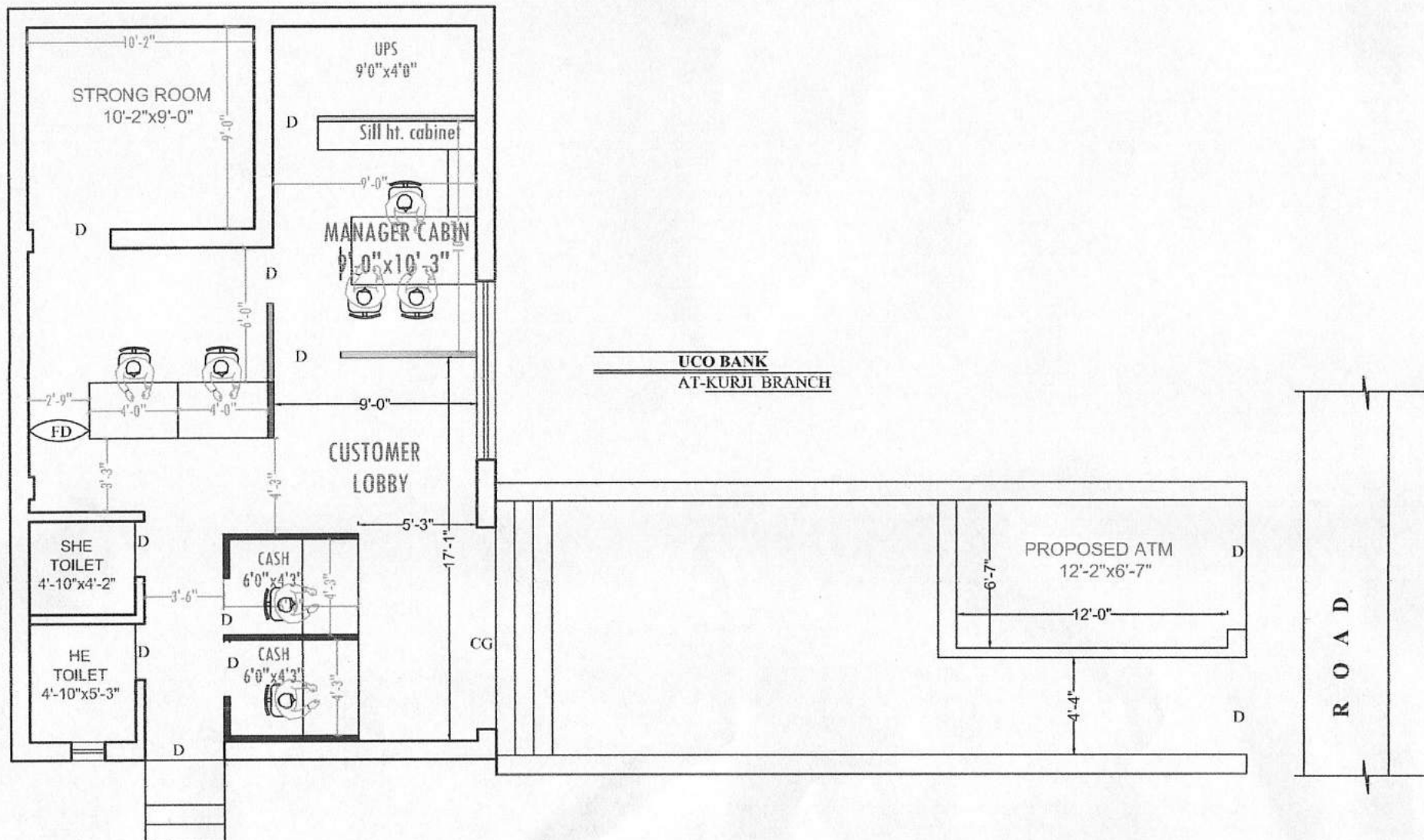
|       |   |        |        |  |  |
|-------|---|--------|--------|--|--|
|       | Providing & fixing false ceiling at all heights with false ceiling tiles of Size 595x595 mm of approved texture, design and patterns having moisture content less than 2%, humidity resistance of 99%, NRC 0.50 to 0.75 as per IS 8225:1987, Non combustible as per BS 476 (part-4)-1970 and light reflectance of 85% (minimum) to be laid in true horizontal level suspended on inter-locking metal T-Grid of hot dipped galvanised iron section of 0.33mm thick (galvanized @ 120 grams per sqm including both sides) comprising of main-T runners of size 15x32 mm of length 3000 mm, cross - T of size 15x32 mm of length 1200 mm and secondary intermediate cross-T of size 15x32 mm of length 600mm to form grid module of size 600 x 600 mm, suspended from ceiling using galvanised mild steel items (galvanizing @ 80 grams per sqm) i.e. 50 mm long, 8 mm outer diameter M-6 dash fasteners, 6 mm dia fully threaded hanger rod upto 1000 mm length and L-shape level adjuster of size 85x25x2 mm, Galvanised iron perimeter wall angle of size 24x24x0.40 mm of length 3000 mm to be fixed on periphery wall / partition with the help of plastic rawl plugs at 450 mm center to center and 40 mm long dry wall SS screws. The work shall be carried out as per specifications, drawing and as per directions of Engineer-in-Charge, With semi perforated 12 mm thick micro tegular edged false ceiling tiles. | SQ.FT. | 495.00 |  |  |
| 16    | (SUGGESTION BOX) Providing and fixing one suggestion box, made with 12 mm ply as per standard design and specifications of the Bank, fully complete, with enamel painting, lock, lettering on top, etc.   | Each   | 1.00   |  |  |
| 17    | Providing and fixing Cheque writing/slip rack projected/supported from wall 7'0" x 1'-3" and a C.T. as per design with suggestion box, first aid box, suggestion box.   | Each   | 1.00   |  |  |
| 18    | (CHECK DROP BOX) Providing and fixing one suggestion box, made with 12 mm ply as per standard design and specifications of the Bank, fully complete, with enamel painting, lock, lettering on top, etc.   | Each   | 1.00   |  |  |
| 19    | vertical blinds : Providing & fixing levelor 10mm vertical blinds having top rail 39mmX34mm high with wall thickness of 1.2mm having 25mm decorative insert. Control unit shall be of Derlin. Plastic runner shall be moulded from Derlin plastic with artification head rail & the top end of the louver fabric shall be polyester viscose/polyester yarn dyed in fast colour with or without protective coating on louvers with chemical for stain resistance and soil repency and shall have GI weight and steel/polymer ball chain for spacing. The top rail should be fixed on bracket of 14 SWG galvanised spring steel fixed firmly on walls by nylon plug and screw as per approved design and direction of the Architect.  | SQ.FT. | 0.00   |  |  |
| 20    | SHUTTER BOX COVERING - Sutter covering with ACP (aluminium composite panel) of 4mm thk. approver color & make with aluminium framing as/required with the provision of rolling shutter maintenance trap door, ele. point all complete job as per standard & specification   | SQ.FT. | 95.00  |  |  |
| 21    | Aircon Louvers (P and F 6" powder coated aluminium Louvers.)  | SQ.FT. | 2.00   |  |  |
| TOTAL |   |        |        |  |  |

**G.S.T(Extra as applicable)**

|  |  |                      |                                     |  |  |
|--|--|----------------------|-------------------------------------|--|--|
| <b>Notes:-</b>                             |  |                      |                                     |  |  |
| Contractor to Note that:-                  |  |                      |                                     |  |  |
| a)   | Footrests to be provided (laminated) with each table / counter without any extra charges, @ 1 per person.                      |                      |                                     |  |  |
| b)   | Extra members, wherever required for stability / otherwise, to be provided with the required finish without ant extra charges. |                      |                                     |  |  |
| <b>G.S.T(Extra as applicable)</b>          |  |                      |                                     |  |  |
| <b>List of Approved Makes of Materials</b> |  |                      |                                     |  |  |
| 1  | Plywood/Block board (BWR)  | 6mm, 9mm, 12mm, 19mm | Kitply / Green panel / /Mayur       |  |  |
| 2  | Laminate   | 1.0 mm               | Greenlam/Merino/ NewmiKa            |  |  |
|  | Glass  | 6mm, 8mm, 10mm,      | Modi /Saint gobain Vista, Universal |  |  |
| 3  | Vertical blinds  |                      | USG Boral/Saint gobain/Hicem        |  |  |
| 4  | False ceiling  |                      | Green ply /Century ply/ kitply      |  |  |
| 5  | Flush door shutter   |                      |                                     |  |  |
| 6  |  |                      |                                     |  |  |



|    |                                |                      |                                |
|----|--------------------------------|----------------------|--------------------------------|
| 7  | Veneer                         | 4 mm                 | Century/ Green/                |
| 8  | Lock/Door Closures/Hardware    |                      | Godrej/Ebco/Hardwyn            |
| 9  | Screws                         |                      | GKW / Mettle fold /Netfold     |
| 10 | Paints                         |                      | ICI/ Burger/ Nerolac/ Asian    |
| 11 | AC grill                       |                      | Air products/Omicron/Patrawala |
| 12 | Channels ,Slides, Fitting      |                      | Ebco/Hettich/ Godrej/dorset    |
| 13 | Aluminum Section (If Required) | Powder coated finish | Jindal/Indal                   |
| 14 | Floor springs                  |                      | Hyper/ Dorma/Hardwyn/dorset    |
| 15 | Melamine Polish                |                      | Asian paint, Nerolac           |
| 16 | Wood preservatives             |                      | Woodguard, PCI, Black Japan    |
| 17 | Calcium Silicate Board         | 12mm                 | Hilux/ USG Boral               |
|    |                                |                      |                                |



| NOTE                                      | PROJECT:-  | REVISION:- | Sheet title :-<br><b>FURNITURE LAYOUT PLAN</b> |   |            |               |
|---|--|------------|--|---|------------|---------------|
| HALF HT PARTITION                         | PROPOSED INTERIOR LAYOUT OF<br><b>UCO BANK</b><br><b>AT-KURJI BRANCH</b> | Date :-    | Issues   | Scale :-  | Date :-    | Drawn by :-   |
| 7' HT PARTITION                           |  |            |  | N.T.S   | 09/05/2022 | RAHUL SINGH   |
| SEMI GLAZED FULL HT PARTITION             |  |            |  | ARCHITECT :-  |            |               |
| CALCIUM SILICATE BOARD FULL HT. PARTITION |  |            |  | <b>ARTCON DESIGN CONSULTANTS</b>  |            |               |
|   |  |            |  | ARCHITECTS, ENGINEERS<br>INTERIOR DESIGNERS, COMPUTER AIDED DESIGN<br>G-04 Laxmi Palace, Mitra Compound, Boring<br>Road, Patna - 800001<br>+91 9951 23771, amikumar77@gmail.com<br>+91 9356 17726 artcondesignconsultants.com |            |               |
|   |  |            |  |   |            | Checked by :- |